

INNOVATION
STARTS HERE


WWW.CCTYGROUP.COM



希西维（江苏）精工股份有限公司

A thick orange bar is located in the top left corner of the slide.


CCTY Mission Statement



To provide quality and solutions, to increase customer value and continuously strive to exceed our customer's expectations.



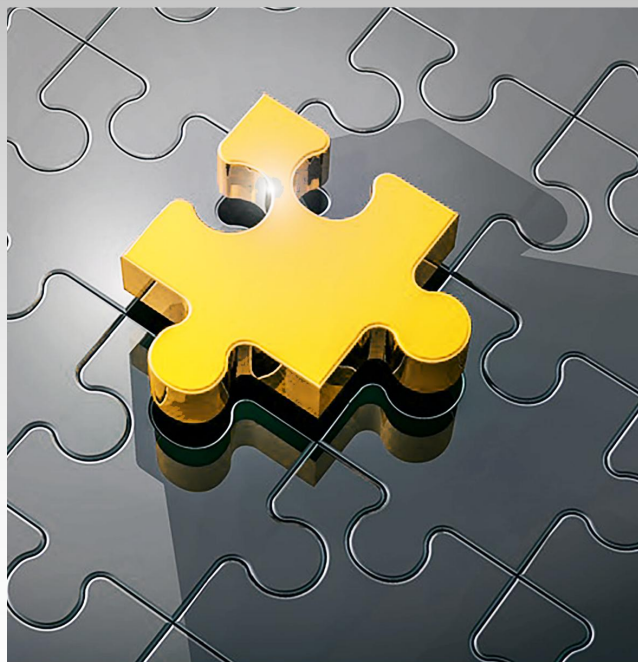
Sustain profitable growth.



Provide an exceptional work environment for employees.

Core Value

Focus on customer's
requirement
Provide customized solution



Quick Reaction
Flexible Manufacturing



Pursue excellence in
segment market



Global Network



Listen to customer voice,
Localized service

- Engineering , Production
- Engineering , Sales, Logistic

Company Data

US
\$

97 Mio

Sales Amount



3,500+

Product Sizes



1,100+

Number of Employees



200,000+

m²
Building Area



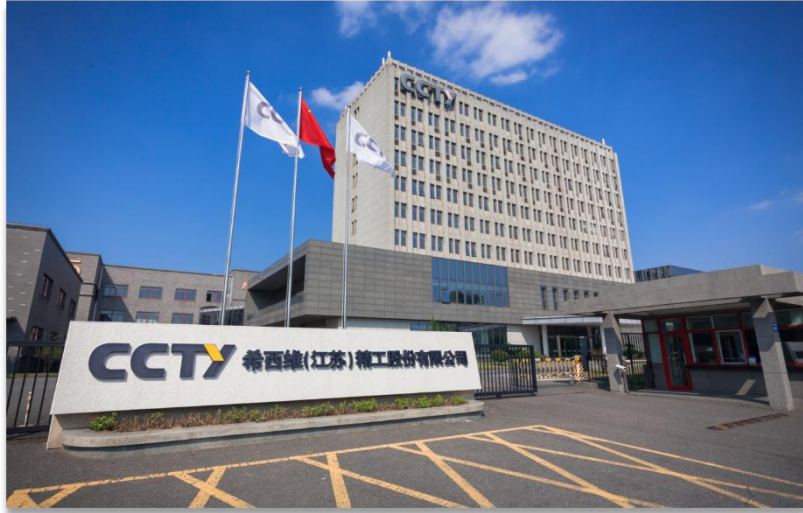
Headquarter(zhenjiang)

Building Area: 120,000 M²
Land Area: 105,000 M²

Global sales(\$): 97 Million
Employee: ~ 1000



Headquarter Plant scene



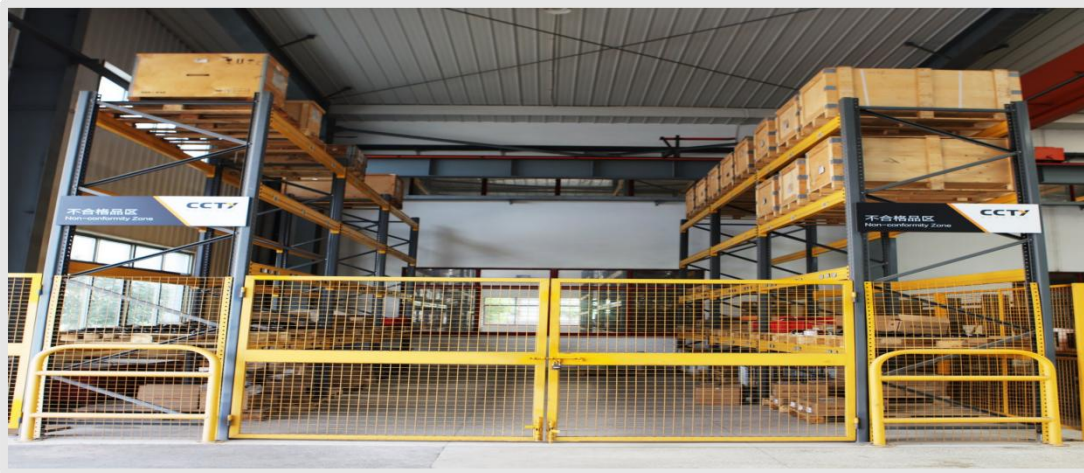
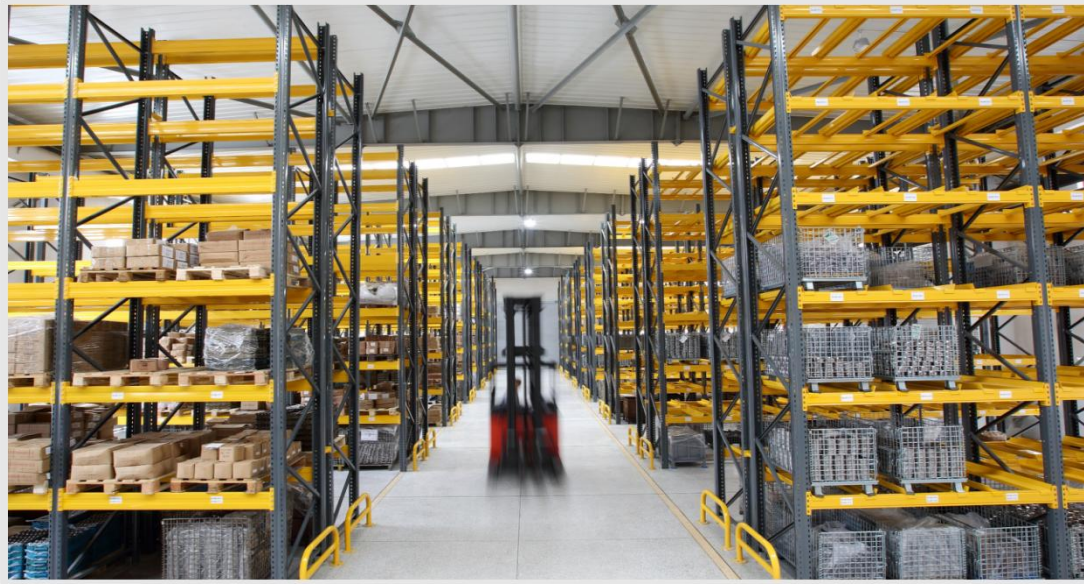
Workshop



Workshop



Warehouse



CCTY BEARING		产品标签	
品名		RDM10X40HOX1 钢球粗车件	
单位		ZJCHSPJ-ZJCH-315300	
 FY2106020944	批号		
	炉号 054S5352-026		
	本箱数量		391
	交货数量		2865
	规格/组别		毛重 20.3
单重	净重		

发运清单 Supplier ASN



供应商名称: 慈溪市祥山轴承配件有限公司

收货仓库: 样端待检库

预计到货时间: 2021-06-03 14:00

FY21060044

托盘序号	型号	炉号	规格/组别	外包装	外包装尺寸	合计(KG)	合计数量	总箱数	整箱数	零箱数	数量/整箱	数量/零箱	毛重/箱(KG)	单位	批号	备注
3	RDM10X40HOX1钢球粗车件	054S5352-026		纸箱-HS-01	330X230X110	148.745524 296675	2865	8	7	1	391	128	20.3	件		内附检验报告
合计						148.745524 296675	2865	8	7	1	391	128	20.3			

托盘数合计: 1

收货人:

收货时间:

Overseas Sales subsidiaries



Lake Zurich, United States



Schwebheim, Germany



Tokyo, Japan



Vadodara, India



Vietnam factory



Haiphong, Vietnam



Xuyi China forging factory



Certification



ISO9001



IATF 16949



ISO14001



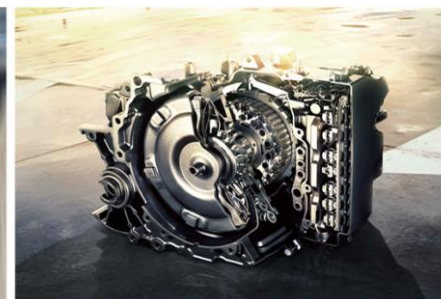
ISO 10012



Core Market

		1	2
3	4	5	9
6	7	8	

- 1. High-speed train
- 2. Transmission box
- 3. Construction equipments
- 4. Agriculture equipments
- 5. Axles
- 6. Shock absorbers
- 7. ATV'S
- 8. Snow mobile
- 9. Forklifts

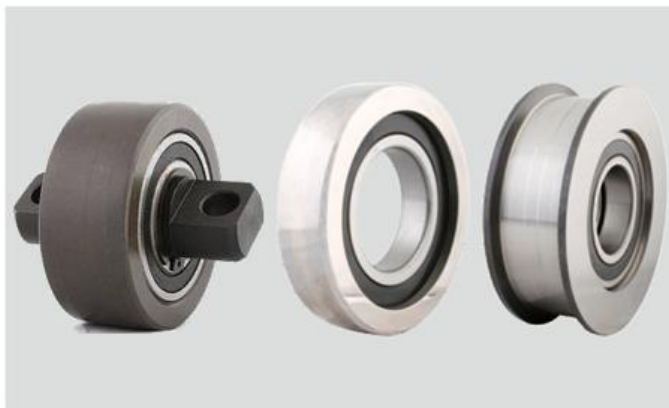


Core Products

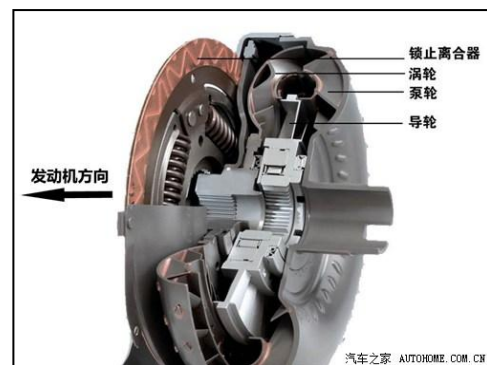


1	2	3
4	5	6

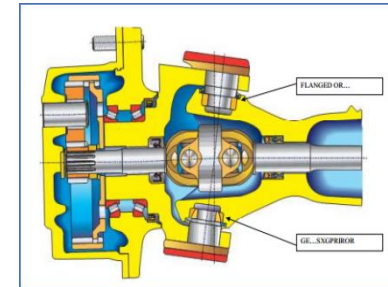
1. Ball Bearing
2. Mast Guide Bearing
3. Roller Bearing
4. Spherical Plain Bearing
5. Bushing
6. Ball Joint and Rod Ends Assembly



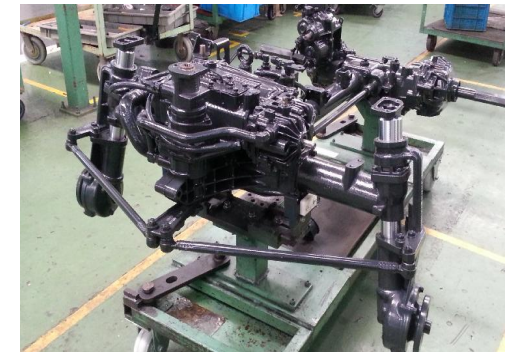
Ball bearing Application



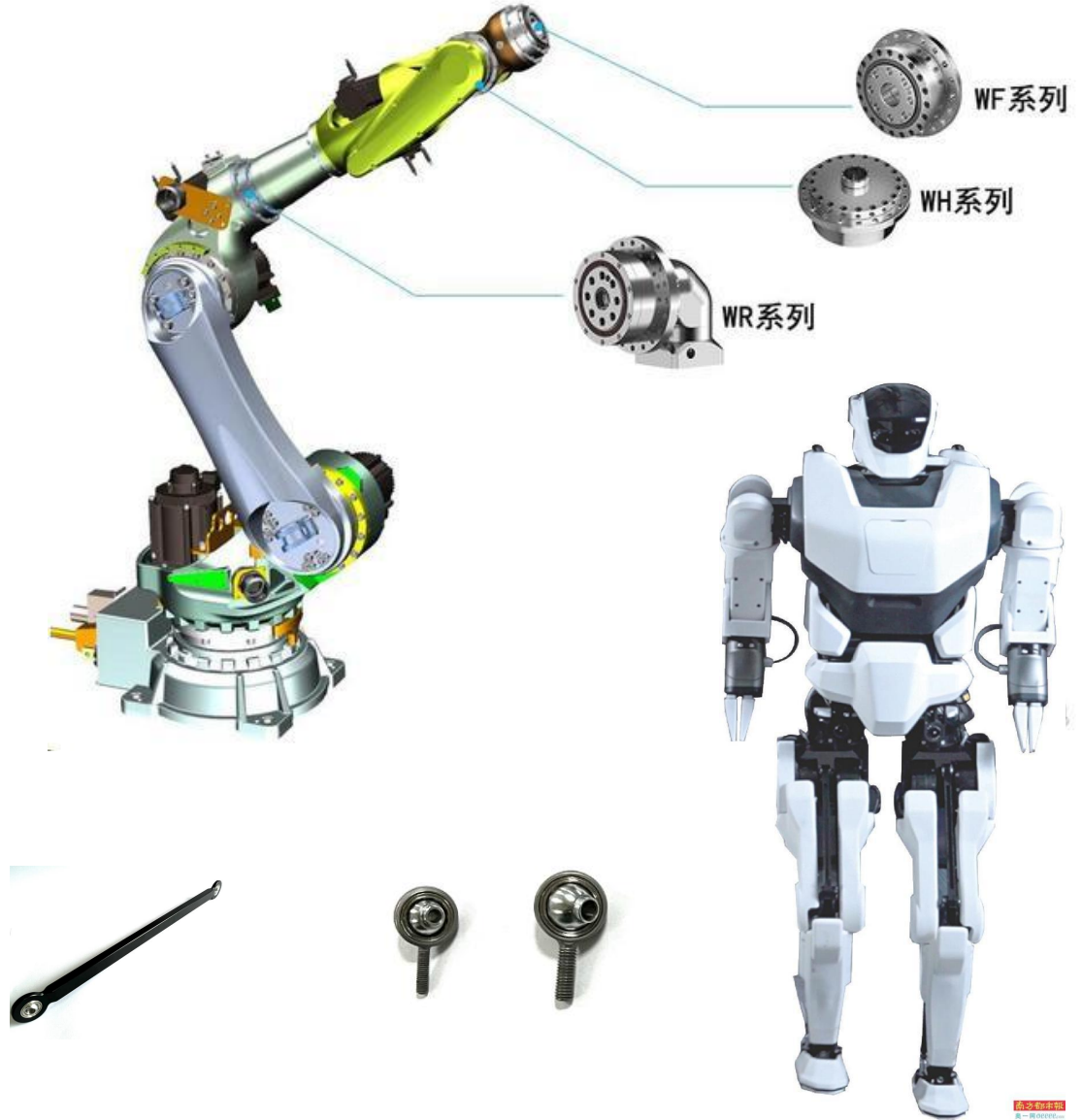
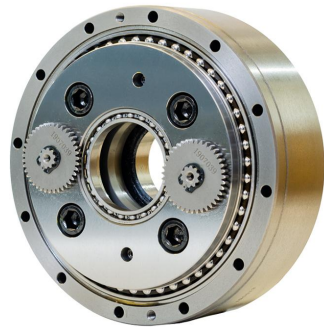
SPB Application



Linkage Application



Robot bearing Application



Elements Analysis



C,S, P, Si, Sn, Fe, Ni, Sb, Cr, Zn,
Pb, Mn, As, Bi, Al, Mo etc.

Test center



Test center



Life test



Dust proofing test



Salt spray test



Friction & Wearing test



Static load test



Impact load test



Jet flow test



High & Low temp. test

INNOVATION
STARTS HERE



THANKS

WWW.CCTYGROUP.COM